



GENERAL

▪ L.O.A	62.00 m
▪ L.B.P	58.50 m
▪ BEAM MLD .	14.00 m
▪ DRAFT SCANTLING	3.70 m
▪ VESSEL TYPE	COMMERCIAL: LCT
▪ HULL MATERIAL	STEEL
▪ CLASSIFICATION	ABS
▪ GRT	1319 T

TANK CAPACITIES

▪ FUEL OIL(DOMESTIC)	309.00 m3
▪ FUEL OIL(CARGO)	917.00 m3
▪ FRESH WATER	379.00 m3
▪ Ballast tanks/drill water	730.00 m3
▪ Lubricate oil tanks	7.70 m3
▪ Dirty oil tank	9.00 m3
▪ Bilge water tank	14.3 m3
▪ Grey Water Tank	85.00 m3

PERFORMANCES

▪ CRUISING SPEED	10 Knots
▪ ENDURANCE	About 30 days
▪ RANGE	About 6700 nautical miles

PROPULSION SYSTEM

▪ MAIN ENGINES	2 x YANMAR 6AYM-WET Marine Diesel Engine
▪ POWER	2 x 829 BHP@1900 rpm
▪ GENSET	2 x 105 Kva, DIESEL DRIVEN GENERATOR, 415/3/50, 3-WIRE ARE PROVIDED; ENGINES TO BE 24D.C. STARTED AND HEAT EXCHANGER COOLED
▪ GEARBOX	Rentjes WAF364L RATIO 4.92 : 1

PUMPS

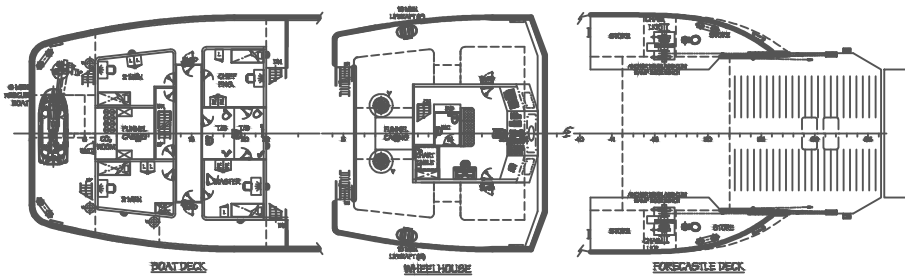
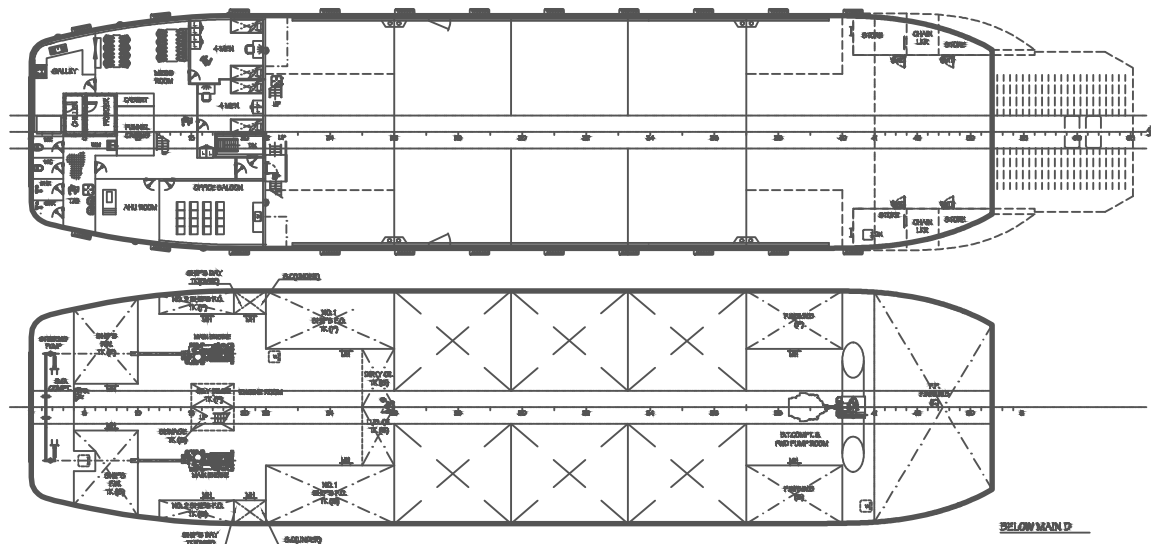
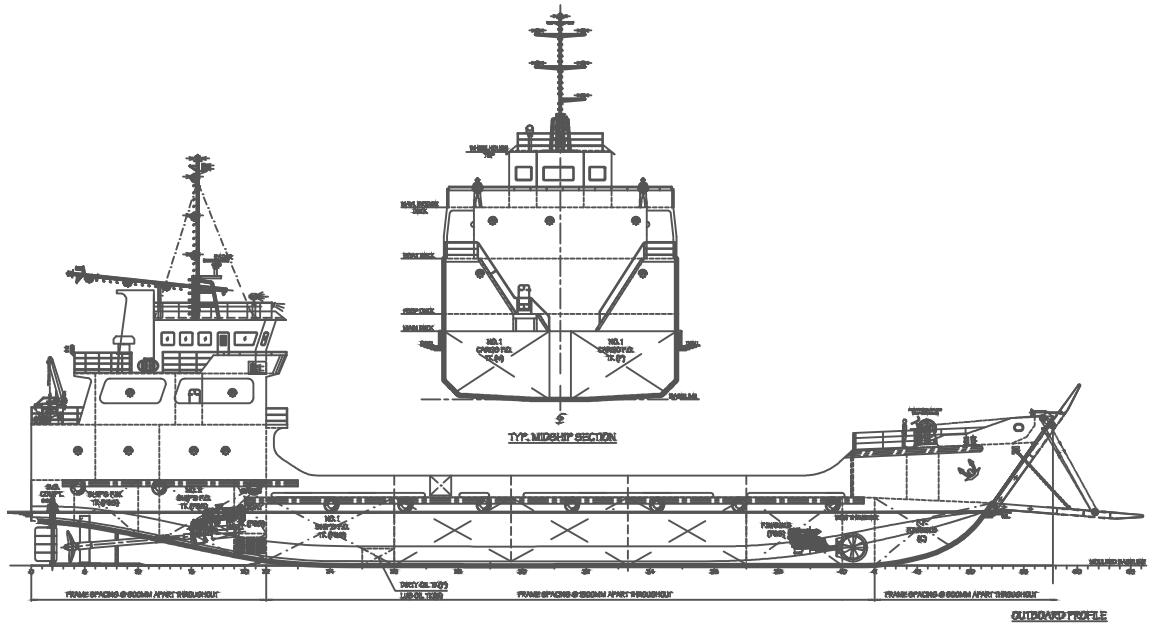
▪ Bilge, Fire & GS Pump	2 x 45m ³ /h @45m total head
▪ Ballast Pump	1 x 100m ³ /h @ 25m total head
▪ Fuel Transfer Pump	1 x 10m ³ /h @30m head
▪ Emergency Fire	1 x 25m ³ /h @45m
▪ Cargo Fuel Oil	1 x 150m ³ /h @ 60m head
▪ Cargo Fresh Water	1 x 80m ³ /h @ 60m head

ACCOMMODATION

▪ 4 x 1-berth cabins	4 men
▪ 10 x 2-berth cabins	20 men
▪ Total	24 men

DECK MACHINERY & SAFETY EQUIPMENT

▪ Bow Anchors	(2) SPEK type Anchor w/ equivalent stockless bower mass of 1740kg.
▪ Bow Anchor Chains	total 247.5 m length (shackles @ 27.5 m) of 36mm dia., grade 2 steel chain cables stud link chains
▪ Mooring lines	4 x 160M long mooring rope of minimum 132.4 kn breaking strength (nylon ropes)



PRINCIPAL DIMENSIONS >

LENGTH O.A (HULL)	62.00 M
LENGTH D.P.	56.00 M
BE/M MLD.	14 M
DEPTH MLD.	4 M
DESIGN DRAFT	5 M
MAIN ENGINE	
GEAR BOX	
DESIGN SPEED @ LIGHT LOAD	
COMPLEMENT	
FUEL OIL	
FRESH WATER	
CARGO FUEL OIL	
CARGO FRESH WATER	
WORKING DECK AREA	

NOTES:

- 1" WEATHER DECK HATCH DOORS TO BE KEPT CLOSED AT SEA AND A PERMANENT NOTICE TO THIS EFFECT SHALL BE DISPLAYED.
- 2" WEATHER DECK HATCH DOORS AT SEA ARE TO BE SECURED AT BOTH SIDES OF THE WEATHER DECK DOOR.

Amsterdam Alexandria Marine

62-LANDING-CRAFT

1140

2-2-2014